



**THE CONNECTION
BETWEEN TEAM
PERFORMANCE
AND WELLBEING**

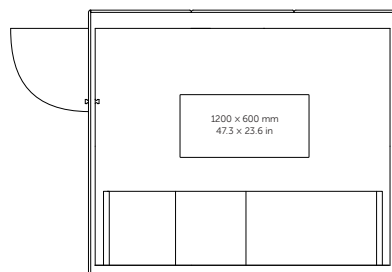
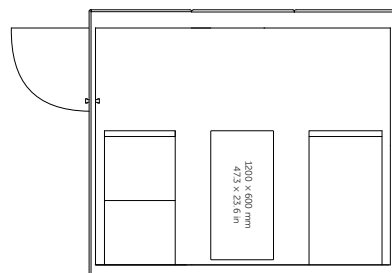
REALM

MICROOFFICE

MICROOFFICE

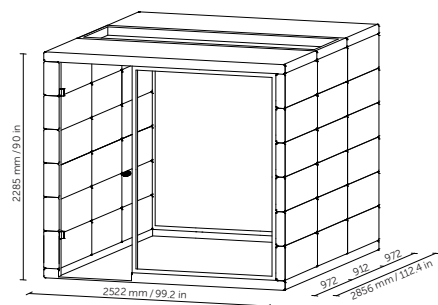
Do you work in an office but still want a quiet environment to get your work done? Finding that quiet place is easier than you think! You can find it in a meeting, while tackling a big project or during an informal gathering in our acoustic wellbeing meeting room.

REALM



TECHNICAL DETAILS

exterior dimensions	2522 x 2856 x 2285 mm / 99.2 x 112.4 x 90 in
interior dimensions	2245 x 2736 x 2128 mm / 88.4 x 107.7 x 83.8 in
weight	950 kg / 2 094 lb
glass walls	sound-insulating glass
solid walls	sound-absorbing sandwich panel with acoustic insulation
glass wall frame and door handle	solid oak wood/black varnish
ceiling	sound-absorbing sandwich panel with acoustic insulation, sound-insulating glass
flooring	carpet (anthracite grey)
ventilation	automatic/manual
lighting	LED, chromaticity temperature 4 200 K
included equipment	electric socket (3x), motion sensor, LED lighting, control panel for lighting and air ventilation, coffee table, seats, coat hook (3x), shelf (2x)
optional equipment	AV connection points, USB and LAN connection (detailed equipment list available on page 37)
color options	decorative fabric (refer to swatches)
certification	CE FSC*



Société Européenne d'Équipements
46/48 Rue Gay LUSSAC, 94 430 CHENNEVIERES SUR MARNE

☎ : 01.56.86.17.30 - commercial@s-2-e.com - www.s-2-e.com